



THIRD HAVEN FRIENDS MEETING

405 South Washington Street
Easton, Maryland 21601
(410) 822-0293
3rdhaven@gmail.com

January, 2026 Newsletter

“Among the doctrines finding wide acceptance by Friends are a universal saving Light and continuing revelation... Quaker Faith is an experience of discovery which starts the discoverer on a journey which is lifelong.” *Faith and Practice* 2018 p.111

Third Haven Friends Meeting Meeting for Worship with Attention to Business 12th month, 28th day, 2025

Opening Silent Worship At 11:30 a.m. clerk Ben Tilghman opened the Meeting.

Attendance: Jim Altman, Mike Berry, Larny Claggett, Lorraine Claggett, Susan Claggett, Beth Inabinett, Janet Kemp, Amy Kimball, Amy Kozak, Bill Lane, Marie Leonard, Clinton Pettus, Kathryn Pettus, Cynthia Quast, Dee Rein, Nancy Robbins, John Schreiner, Priscilla Sener, Sheryl Southwick, Paige Tilghman, Heidi Wetzel, Joan Wetmore, Jonathan Williams, Mary Yancey,

Comments on 12th Query, “Witnessing in the World – Witness & Civic Responsibilities”

This seems to be one of the more political queries. What do words from the Messiah mean, “and the government shall be upon his shoulders” for us today?

Approval of minutes from 11th Month Meeting for Business APPROVED

Clerk’s Desk –Ben Tilghman

A Nov. 9th letter from Herndon, Virginia Friends Meeting was received enthusiastically accepting transfer of John Turner’s membership.

An all clerks meeting in January is being considered for future planning for the Meeting. All clerks meetings are not restricted to clerks; all are welcome.



Nominating Committee Final Report – Janet Kemp APPROVED
2026- Nominations List

Committees of Third Haven Friends Meeting:

Clerk of the Meeting

Ben Tilghman

Assistant Clerk

Larny Claggett

Recording Clerks

Dee Rein, Nancy Robbins

Treasurers

Kristen Hawkinson, Janet Kemp

Membership Records

Marsie Hawkinson, Janet Kemp

Caretaker

Clay Owens

COMMITTEES:

Budget & Finance Bill Lane, Clerk, Kristin Hawkinson (treasurer), Janet Kemp (treasurer), Steven Meixner, Cynthia Quast (Past Treasurer), Bill Schauer

Burials & Memorial Ben Tilghman (Clerk), Larny Claggett(P&G), Katherine Johnson & Amy Kimball (Past. Care), Marie Leonard

Communications Dee Rein (tech support, newsletter, announcements), Clerk, Jim Altman, Molly Brian(Tech Support), Tania Harrison (website), Marie Leonard (Directory & Graphic Design), Clinton Pettus, Kathryn Pettus (phone), Mary Yancey

Facilities Use Larissa Kitenko, Clerk

First Day School Paige Tilghman & Katie Claggett – clerks, Sarah Claggett, Susan Claggett, Sarah Hildebrand, Kulveen Virdee

Hospitality Paige Tilghman, clerk, Nell Folmar, Beth Mufson, Terry-Thomas Primer, Bill Schauer, Christina Swaine, Jonathan Williams

Library Lorraine Claggett, Janet Kemp, Ellen Schechter, Paige Tilghman

Nominating Committee Paige Tilghman, Mary Yancey, + 1 pending Clerk's nomination

Pastoral Care Katherine Johnson & Amy Kimball, clerks, Lorraine Claggett, Susan Claggett, Marsie Hawkinson, Catherine Cripps, Beth Mufson, Joan Wetmore

Planning Committee Steve Meixner, Clerk, Molly Brian, Larny Claggett, Susan Claggett, Sarah T. Claggett, Tom Corl, Sarah Hilderbrand, Bill Lane, Marie Leonard, Nancy Robbins, Priscilla Sener, Mary Yancey

Property & Grounds Larny Claggett - Clerk, Robert Gladney – Assistant Clerk, Angus Ford, Drew Gundlach, Amy Kimball, Bill Lane, Clay Owens, Nancy Robbins, Priscilla Sener, Sam Steffens, Dan Sweeney, Mary Yancey, Winslow Womack (emeritus)

Scholarship Bill Schauer (Clerk & Treasurer), Lorraine Claggett, Susan Claggett, Kristen Hawkinson, Marsie Hawkinson, Marie Leonard, Tom McCall, Paige Tilghman,

Testimonies & Concerns Mary Yancey, clerk, Jim Altman, Lorraine Claggett, Beth Inabinett, Amy Kozak, Tom McCall, Steve Meixner, Beth Mufson, Ellen Schechter, Thom Sinnott, Sheryl Southwick, Sam Steffens, Paige Tilghman, Jonathan Williams,

- **American Friends Service Committee (AFSC)** – Lorraine Claggett
- **Friends Committee on National Legislation (FCNL)** – Sarah Sayre

- **Chesapeake Multicultural Research Center (ChesMRC)** – Katie Claggett
- **Food Link** – John Schreiner and Heidi Weitzel
- **Humanity for Immigrants** – Beth Mufson and Mary Yancey
- **Quaker voice of Maryland** – Beth Mufson
- **Talbot Association of Clergy and Laity (TACL)** – Molly Brian, Thom Sinnott, Mary Yancey
- **Talbot Green Hands** – Jonathan Williams, Mary Yancy
- **Talbot Interfaith Shelter (TIS)** – Mary Yancey, Coordinator, Lorraine Claggett, Kristen Hawkinson, Beth Inabinett, Phil Sayre

Worship & Ministry Clinton Pettus, clerk, Jim Altman, Molly Brian, Beth Inabinett, Beth Mufson, Nancy Robbins, Jonathan Slocum, John Schreiner, Sheryl Southwick, Sam Steffens

Liaisons & Representatives:

Philadelphia Yearly Meeting (PYM) Nancy Robbins, Susan Claggett

Southern Quarterly Meeting - Susan Claggett – Recording Secretary



Worship & Ministry Annual Report – *Clinton Pettus* ACCEPTED

The Worship and Ministry Committee of the Third Haven Meeting of Friends has faithfully worked to fulfill its purpose as outlined in the Philadelphia Yearly Meeting (PYM) *Faith and Practice* of 2018. We devoted our efforts to deepening the faith of both members and attenders, and we have actively sought to ensure that meetings for worship, meetings for worship with attention to business, and each member's and attender's mind, body, and soul align in the manner of Friends. We began the year by discussing the objectives that new and former members of the committee should understand and embrace. Among the activities that were initially outlined and those that evolved during the year are the following:

- Onboarding of new members of the Worship and Ministry Committee.
- Being role models for others, as we encouraged all to "Let their lives speak."
- Encouraging innovation and forward-looking approaches in identifying activities and pathways forward.
- Serving as "greeters" and "readers" on First Days.
- Reading from the "advices" found in Philadelphia Yearly Meeting (PYM) *Faith and Practice*, 2018, during meeting for worship at least once each quarter. Advices are a collection of spiritual guidance and wisdom passed down through our faith tradition, and we believe they offer valuable insights for our spiritual growth.
- Recognizing and supporting good practices in meetings for worship using gentle reminders and friendly exchanges.
- Inviting all members and attenders to meetings of the Worship and Ministry Committee and treating them as valuable resources for the committee.
- Providing opportunities to share "spiritual journeys," thereby fostering a culture of continuous spiritual growth and learning from, about, and with one another.
- Sponsoring an activity titled 'Creating Community with Hearts, Hands and Voices,' which provided an opportunity for spiritual renewal through art and music. Through this

activity, we sought to foster a sense of community and spiritual growth through shared creative expression.

- Developing a very successful adult religious education series titled “Faith and Practice at Third Haven Friends Meeting,” with the following topics:
 - Quaker History
 - That of God
 - Silent Worship
 - Testimonies and Witness
 - Community
- Ensuring that literature about the Religious Society of Friends and the Third Haven Meeting of Friends was visible and accessible to visitors, attenders, and Friends.
- Providing representatives to the Talbot Association of Clergy and Laity.
- Discussing the feasibility of being helpful to Meetings of the Southern Quarter that are facing challenges, such as declining membership.
- Sponsoring two worship-sharing sessions and providing general feedback to the Meeting afterwards.
 - The following queries were used for the first worship-sharing session:
 - What spiritual lessons have I learned from the current sociopolitical environment?
 - To what extent have I treated lessons learned as opportunities for growth on a personal level and as a member of a worship community?
 - The second worship-sharing session involved the following queries:
 - How is my spiritual well-being in the current sociopolitical environment?
 - What can I do to enhance my spiritual well-being?
 - What can the Meeting do to support my spiritual well-being during the current sociopolitical environment?

Being fortunate enough to have various members of the committee participate in activities of the Southern Quarterly Meeting, Philadelphia Yearly Meeting, and the Friends General Conference. Participation in these activities has enabled members of the committee to have a broader view of the Religious Society of Friends, deepen the integration of their spiritual beliefs into their everyday actions, and be more powerful witnesses in the world as they seek to walk in love toward others.

Comments: Worship Sharing was usefully revised and mentioned in pastoral care letters.

Regular participants in the work of the Worship and Ministry Committee were as follows: James Altman, Molly Brian, Tom Corl, Beth Mufson, Clinton Pettus, Clerk, Nancy Robbins

Worship and Ministry, 2025 Spiritual State of the Meeting - *Clinton Pettus* DRAFT ACCEPTED yet open for future input prior to second reading in January.

Prologue

This spiritual state of the meeting report was (a) prepared by the Worship and Ministry Committee of the Third Haven Meeting of Friends, (b) presented for a first and second reading at meetings for worship with attention to business, and (c) approved for submission to the Philadelphia Yearly Meeting by the Meeting after worshipful discernment. The purpose of this report is to respond to the question “How does spirit move among us?” Using this query, we have engaged in a spirit-led assessment of our worship, community care, spiritual growth, outreach, and challenges.

Worship Life

Our meeting maintains stable attendance, with about 40 attending in person on First Days and several attending online. We also offer a mid-week hybrid option to support members on their spiritual journeys. Having an online choice has sometimes been challenging; however, we have tried to make technology as unobtrusive as possible.

Queries in the Philadelphia Yearly Meeting (PYM) *Faith and Practice* of 1997 are read aloud several times a month at meetings for worship. Vocal ministry is often based on the queries read, but it varies, as some queries tend to stimulate vocal ministry more often than others. A challenge for our Meeting is ensuring that all Friends understand when a thought rises to the level of being vocal ministry. Among the other challenges are getting Friends and attenders to (a) stand quietly at the entrance to the Meeting when someone is engaged in vocal ministry, (b) avoid reading and representing favorite poetry or prose as vocal ministry, and (c) enter the meeting in silence regardless of how much time there is before the appointed start time for worship.

Community and Care

Our Meeting has sponsored many activities designed to support one another spiritually, emotionally, and practically. Examples of this include worship-sharing sessions held to give Friends opportunities to share what they were experiencing in the current sociopolitical environment and how the Meeting might support their spiritual well-being during such times. Similarly, we provided an opportunity for spiritual renewal through art and music to foster a sense of community and spiritual growth through shared creative expression. All of these activities were well attended and greatly appreciated.

Space for our First Day School was recently renovated, with attendance before and after the renovation being stable. Through the efforts of dedicated Friends involved in First Day School, intergenerational activities, such as potluck meals have been held several times a year. As young Friends move from one educational level to another (such as from middle to high school or high school to college), they are recognized in various ways for their achievements.

Over the past year, we have been delighted to see some Friends who had been away for a while return and have welcomed several newcomers. We have lost some Friends through moves to be near relatives and friends. Others have left without openly sharing their reasons. We recognize that we cannot meet everyone's wants and needs. Nevertheless, we believe that it is our responsibility to keep trying in large and small ways. For example, opportunities to share the joys and concerns are available before the close of worship and in the bi-weekly printed announcements of the Meeting. Similarly, cleanup days occur periodically and involve both outdoor and indoor activities. These activities are intergenerational and not only help maintain a positive physical environment for worship but also enhance the spiritual community, as nothing brings Friends together more than a tangible task done well. Similarly, activities such as contributing to a weekly food basket, striving to overcome technology problems, holding a carriage shed sale, and singing together at the close of worship have helped enhance our sense of community and of caring.

Witness and Outreach

In addition to providing care to our worship community, we have worked to deepen our knowledge and understanding of broader community issues, such as immigration, food insecurity, and relating across perceived differences. We have shared announcements such as "Conversations on Race," honoring the legacy and heritage of indigenous peoples, and

opportunities to read to kindergarten children sponsored by community organizations. We have sponsored speakers with expertise and experience in areas of concern and invited residents of the broader community to attend; encouraged all to communicate their concerns and joys to local, state, and national officials; donated money and food to reputable organizations; and gotten involved in several organizations and efforts to be examples of loving and caring for others.

Spiritual Growth

In addition to individual presentations about “Spiritual Journeys” sessions on “Reading the Gospels” have been available. One of our efforts in spiritual growth has been a series titled “Faith and Practice at Third Haven Friends Meeting.” Sessions in the series have included: (a) “That of God,” (b) “Silent Worship,” (c) “Testimonies and Witness,” and (d) “Community.” In these activities, Friends have been open about things that are close to their hearts, which increases the feeling of community as we grow spiritually.

Challenges

Confusion sometimes arises over whether involvement in external organizations and activities is based on a personal leading, ad hoc group work, or an official Meeting role. Thus, the challenge is to define ways to ensure there is no uncertainty about whether the activities of members are performed as Meeting representatives or as individuals. Another challenge has been to help Friends to focus more upon Quaker testimonies or values and less upon personalities.

Epilogue

We conclude with a commitment to ourselves and others to continue our shared journey in faith, community, and service. We celebrate our accomplishments, acknowledge our shortcomings, and remain committed to doing a little better and being a little better along the way. Guided by spirit and unity, we look to tomorrow with faith, hope, and love.



Tree Succession Plan-Mary Yancey ACCEPTED

The final Tree Succession Plan (TSP) was presented to the Meeting on Sept. 19, 2025 by Jonathan Ceci Landscape Architects (JCLA.) This is a summary of that plan and next steps presented to the Meeting for acceptance and approval. The Tree Succession Plan is the fourth of the four Phase 1 projects approved by the Meeting under the Master Plan.

The TSP consists of an inventory of existing trees highlighting their size, condition and special status (memorial tree, etc.) recommendations for removal, repair, and infill planting. There are about a dozen recognized memorial or other trees of note (example the large white oak tree) noted in the plan. These are mainly in the Front Lawn and Burial Ground areas.

There are a moderate number of trees listed in fair or poor condition; mostly along the lane, the south wall, and toward the back (northern) part of the property. Critical root zones of all combined trees cover approximately 80% of the property.

There are a large number of Specimen Trees (diameter greater than 30 inches) distributed throughout the property. The critical root zone of these trees is greater than for other trees; therefore, they require more protection from soil disturbance.

A moderate number of trees on the southern half of the property (Front Lawn and Meadow areas) will be impacted by full implementation of the Master Plan. Some of these along with unhealthy trees are identified for early removal. Trees listed in fair condition are identified so that their successors can be planted, and those trees can be removed as they age out.

Management strategies include pruning, removal of vines and other invasive species, and planting to ensure a diversity of healthy trees and shrubs at different ages and heights. It is necessary to actively manage the landscape to ensure the result that we want.

There are six different character zones envisioned in the plan, identified by their existing character and planned use. They are:

The (Loblolly) Lane; The Front Lawn; The Burial Ground; The Nature Play Area; The Dell (Swale); and the Meadow. Different strategies are recommended to create and maintain the character that we want in each area.

The Lane is envisioned as similar to its current state, with ornamental grasses and shrubs interspersed between the pines. Additionally, a row of younger loblollies is recommended between and behind the current ones to ensure succession as the older pines age out.

The Front Lawn too maintains its current character with the removal of some diseased, dying or threatened trees and the judicious addition of ornamental understory (smaller) trees and shrubs, not too close to nor blocking sight lines to the Old Meeting House.

The Burial Ground retains a similar character with the addition of some designated walking paths, possible thinning of trees along the western wall, and designated spaces for memorial trees. (Memorial tree locations will also be designated on other areas of the property with a list of recommended species for each location.)

The Nature Play Area would undergo perhaps the largest transformation, envisioned as a largely open area with a few canopy trees, walking paths, gathering structures, play areas, shrubs and planted herbaceous beds. There would be a bridge over the Swale connecting the Nature Play area to the back of the Meadow area (behind the caretaker's house.)

Walking paths, perhaps sized to accommodate an electric golf cart, are designed throughout the Meeting property, connecting and allowing easier access to areas that are currently underused. Understory trees, shrubs and perennial planting beds are also envisioned throughout the property.

The Dell or Swale is envisioned as a conservation/restoration area with more densely planted native trees, shrubs, and herbaceous perennials.

The Meadow encompasses the large area to the East of Annie's Cottage and the Carriage Shed, circling back around behind the caretaker's house to the Dell. The central area of the Meadow would be open (as now) with a border of tall pollinator meadow/grassland plantings, and a semi-circular walking path. Outside of this area would be a mix of canopy and understory trees and shrubs. This area has the potential to site a good number of memorial trees.

This is a synopsis of the TSP as received from JCLA. Members of the TSP team (Property and Grounds and Planning Committee members, and other interested Meeting members) will meet early in the new year to begin identifying specific tasks and a timeline for implementation. Funding for the TSP has been largely from a Chesapeake Bay Trust grant, with some contribution from the Third Haven Building Fund and Third Haven Trustees. It is expected that Building funds will be used to begin implementation of the TSP, as approved by the Meeting earlier this year. Future funding clarity will be sought from the Meeting.

Comments:

Physical marking of trees to be removed was requested.

A good practice for future memorial trees would be to plan them in advance with a way for people to submit their suggestions to Property and Grounds or the Burial Committee.



First Day School Transition- Susan Claggett

New First Day School leadership is coming. Appreciation extends to the Meeting for renovations: new stairway, second floor new paint, carpet and furniture. Transitions can be hard, a good thing, and necessary to have new energy so our Meeting can continue to grow. Ask yourself, “Do you have energy, passion and talents for your work for the Meeting?” Susan loved developing the curriculum, teaching the kids, connections with the families. One can learn more about Quaker process in committee work. First Day School shares that with the families. Philadelphia Yearly Meeting is a wonderful resource for our committees, including books they shared with First Day School, among them: *Unconventional Saints: Holy Trouble Makers*, and *Who is My Neighbor? All Creation Awaits* was donated to FDS by the Third Haven Pastoral Care committee, an example of network, support and connections through committees. Philadelphia Yearly Meeting has two witnesses: addressing racism and addressing climate change. There is a wealth of information available to our committees. Find your energy, your passion, your gifts and turn them to the Meeting.

Comment: One of the avenues of success for our Meeting is the young people
Thanks to Susan as First Day School clerk was expressed!

New business

The peace pole has been removed to be refurbished and will return to the same spot.

Closing silent worship 12:20 p.m.

Recording Clerk: D. Rein

Our Condolences go to the Rouse family on the loss of our former clerk, Anne Rouse.



Anne Lank Rouse, a woman of quiet grace, generous spirit, and joyful laughter, passed away peacefully on October 13, 2025, at the age of 89.

Born on August 12, 1936, in Buffalo, Ny., Anne was the eldest child of Everett and Myra (Lewis) Lank. She moved with her family to Bethesda, Md., in 1943, and graduated from Bethesda–Chevy Chase High School. The oldest of four children, she is predeceased by her brother Joe and is survived by sisters Susan and Jean.

A lifelong Friend (member of the Society of Friends, or Quakers), Anne's life was guided by a deep sense of peace, integrity, and compassion. She met her future husband, Jim Rouse, at Friends Meeting of Washington on Florida Avenue and married in June 1956, beginning a marriage and partnership that would last nearly seventy years that were marked by love, service, and shared laughter.

During Jim's Navy service, they lived in Brunswick, Ga.; Lexington Park, Md.; and Albuquerque, NM, before returning to the Washington, DC area. There they settled in Northern Virginia, where they raised their five children: Ellen, Joanne, Betty, Carol, and James. She leaves behind her beloved husband Jim; her five children and their spouses; 16 grandchildren and soon to be 17 great-grandchildren.

Sympathy notes may be sent to Jim Rouse and family, Friends Homes, 925 New Garden Road, Greensboro, NC 27410. In lieu of flowers, donations can be made to the American Friends Service Committee (AFSC).

Tulip Award *Amy Kozak*



Each year the Dutch government recognizes human rights defenders with a Tulip Award and this year the nominees include my friend Eid Suleman (left in middle row). We met in 2017 during the Sumud Freedom Tour of Palestine sponsored by Nonviolence International & Holy Land Trust. Together our delegation, comprised of Palestinians and Internationals, experienced and witnessed the oppressive apartheid system as our delegation travelled in peace from the river to the sea. Eid lives on the front line in the West

Bank where home demolitions and killings by the Israeli Occupation Forces and Settlers continue with little to no recourse. Please join me in holding Eid, his family, his village, and the people of Palestine in the Light. This nomination is significant in what is now a multi-generational struggle for fundamental human rights. *Beth Mufson* adds, “We need to elevate the positive, inspirational stories that happen daily in order to counteract all the dismal news that inhabits our social media and inboxes. Let us rejoice in these powerful stories and celebrate those who made them possible.” This link will take you to the Tulip Award website in the Netherlands. <https://www.government.nl/topics/human-rights/human-rights-tulip>

The Worship and Ministry Committee is offering a religious education program on "Faith and Practice at Third Haven Friends Meeting."



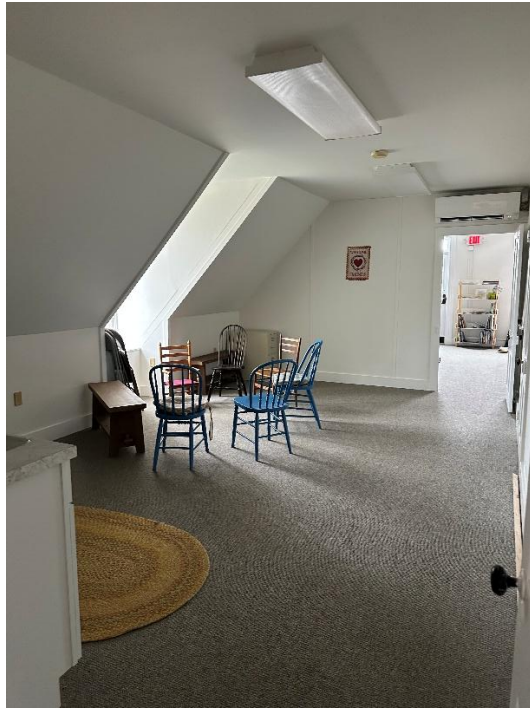
This 6-session program follows on Quakerism 101 offerings, from time to time in the past. This is a shorter more condensed program, more focused on the life of Third Haven. It may be of interest to more recent members and attenders. On December 7th Clinton and Kathryn Pettus led the focus on Community in varied forms and perceptions.

Next up on January 4th is Future of Third Haven Friends Meeting with Clinton Pettus.

First Day School News

During Advent First Day School children received Advent calendars with the nativity story as a lead in to Christmas. Then Susan Claggett and Beth Mufson delivered wooden puzzles created by Beth to First Day School families at Christmas. Matt Moore responded, "Thank you so much. The puzzle is super cute. Thank you for delivering it; that's so kind of you. Merry Christmas!" Everyone is pleased with the updates to the Brick Meeting House upstairs area (pictures below) as well as the new stair access. First Day School teachers and families thank the Meeting for this wonderful improvement.





Immigrant Rights

Testimonies and Concerns has been investigating the topic of immigrant rights and preparedness for ICE as it relates to Third Haven Friends Meeting and positions that might be proposed. Following meetings with an immigration attorney, materials specifically geared for Third Haven regarding ICE preparedness were drafted and sent to the clerk. Some of the materials require decisions and Ben is reaching out to other Third Haven members for their input on those decisions prior to presentation at Meeting for Worship with Attention to Business. In the meantime, the following link provides useful information and a variety of resources.

<https://www.ilrc.org/community-resources/know-your-rights>



Congratulations to Allan Mielke

On being recognized for 35 years of service volunteering with the Waterfowl Festival.

Zoom Helpers

Zoom can help one access Third Haven Meeting for Worship, Meeting for Worship with Attention to Business or some committee meetings if in person attendance isn't possible.

Even when in personal attendance at Meeting for Worship, Zoom can be used on a cell phone with ear buds to improve one's ability to clearly hear people speaking in the Meeting.

Would you welcome an in person coaching session on how to use Zoom for these or other purposes? How about a brief group training First Day after Meeting for Worship/Hospitality? Your communication committee is available to schedule a one-on-one session at your convenience. (The group session will be scheduled later.) Contact Dee Rein and one of us will get back in touch to arrange a suitable opportunity. Our goal is to help everyone participate fully in the Third Haven Friends Meeting community.

Let us Be the Light

